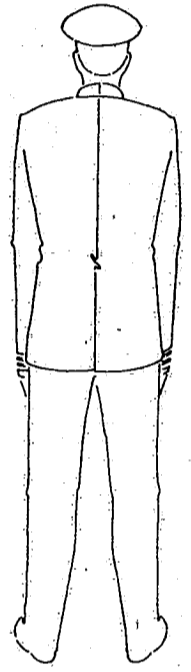
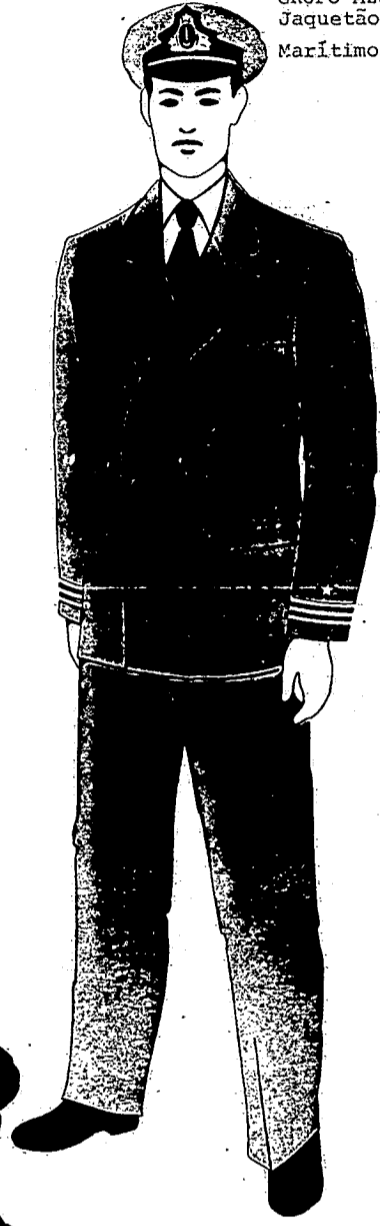
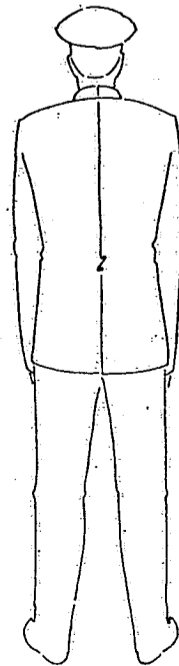


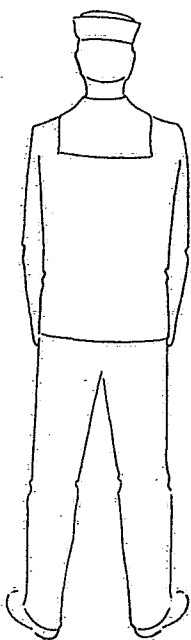
GRUPO AZUL
Jaquetão Azul, para Oficiais,
Marítimos e Fluviários (Região Sul).



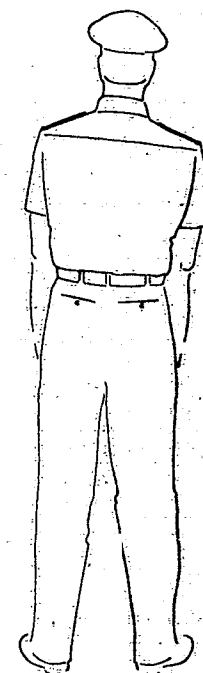
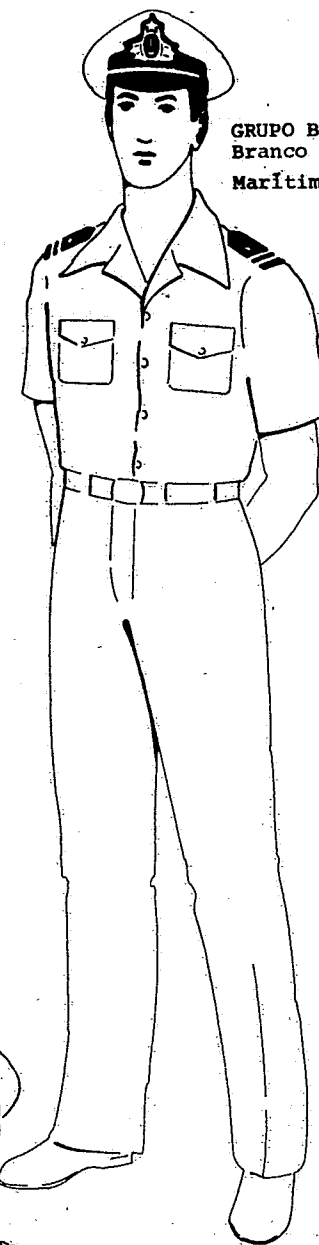
GRUPO AZUL
Jaquetão Azul, para Graduados,
Marítimos e Fluviários (Região Sul).



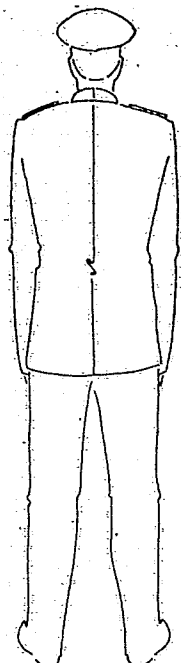
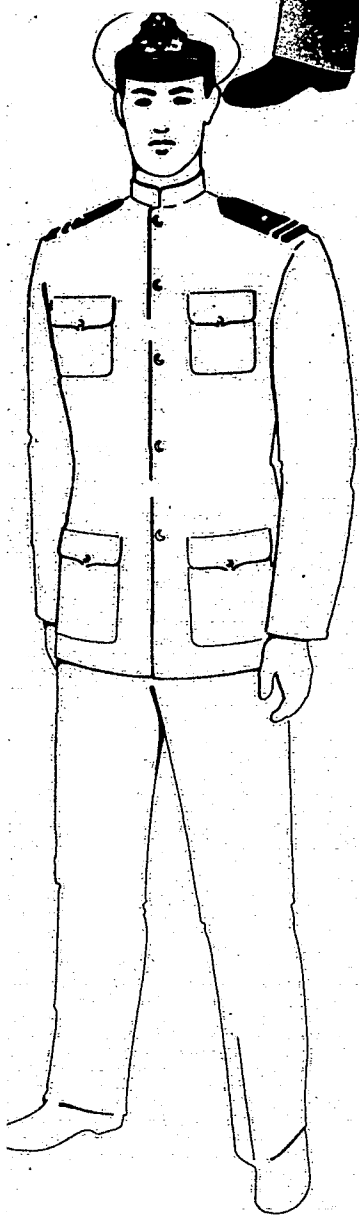
GRUPO AZUL
Gandola e Calças Azuis, para Subalternos,
Marítimos, Fluviários, Pescadores e Regionais.
Usado de acordo com as condições climáticas.
Facultativo para Fluviários, Pescadores
e Regionais das Regiões Norte/Nordeste.



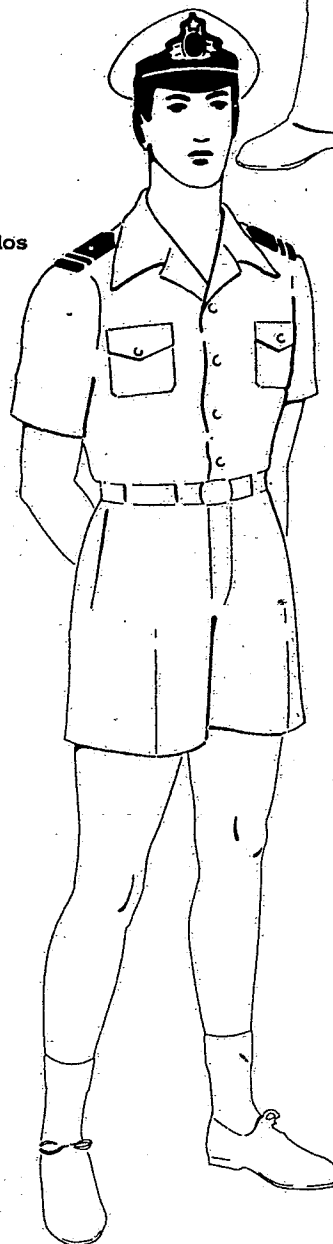
GRUPO BRANCO
Branco de Verão - para Oficiais e Graduados,
Marítimos e Fluviários.



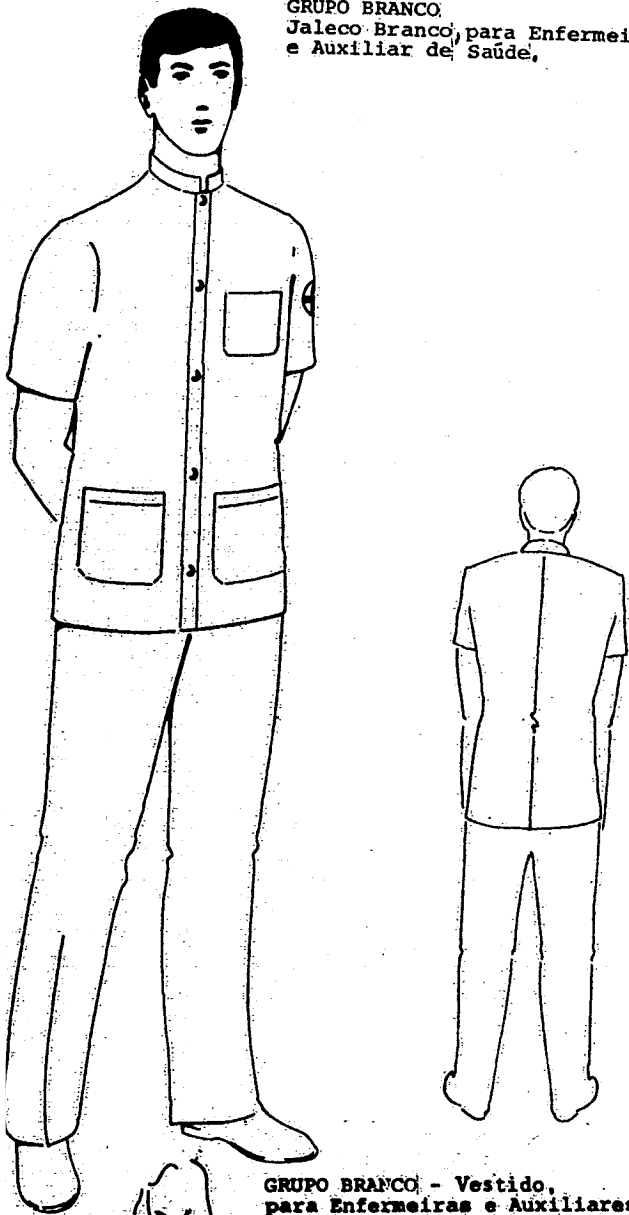
GRUPO BRANCO
Dolmã Branco, para Oficiais e Graduados
(Marítimos).



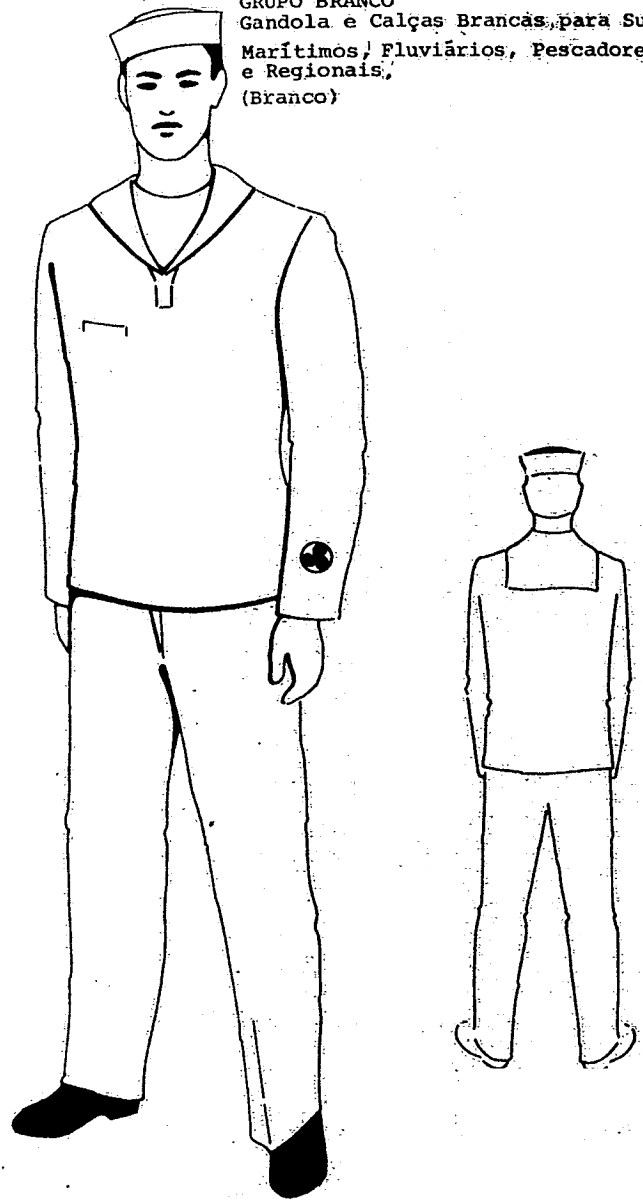
GRUPO BRANCO
Branco com Calção, para Oficiais e Graduados,
Marítimos, Fluviários, Pescadores e Regionais.



GRUPO BRANCO
Jaleco Branco, para Enfermeiro/a
e Auxiliar de Saúde,



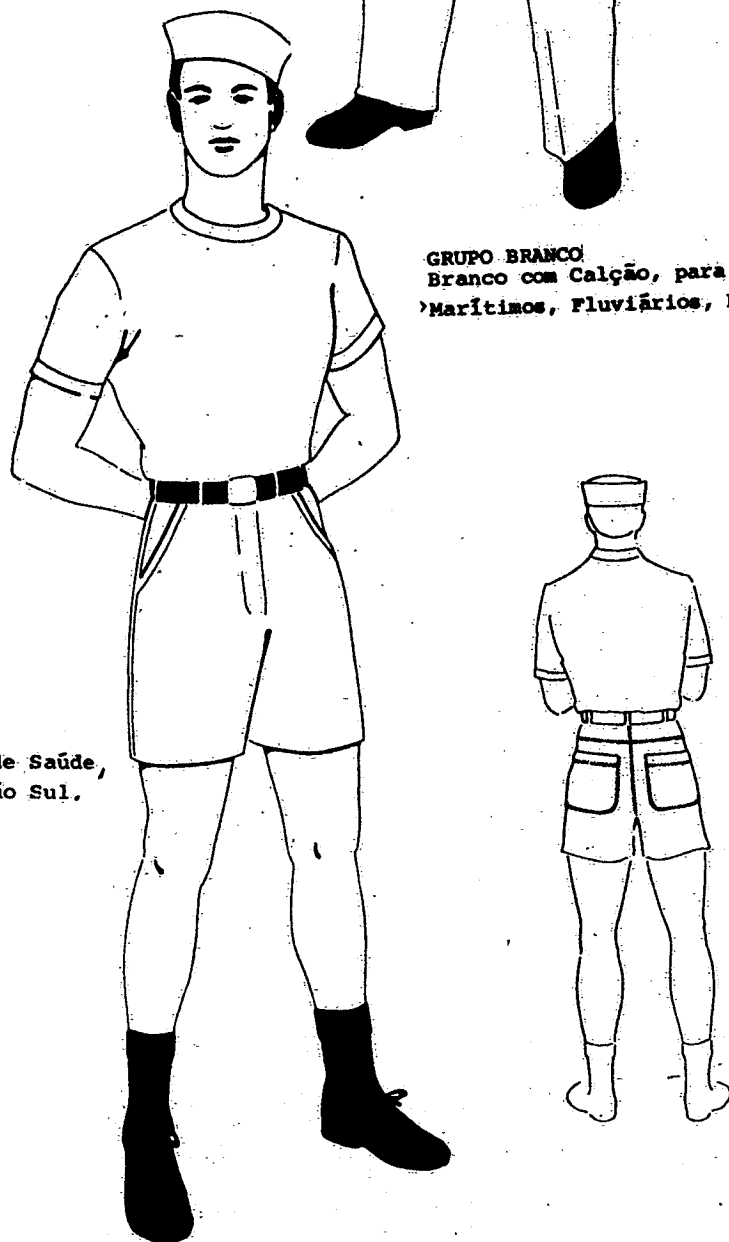
GRUPO BRANCO
Gandola e Calças Brancas, para Subalternos,
Marítimos, Fluviários, Pescadores
e Regionais,
(Branco)



GRUPO BRANCO - Vestido,
para Enfermeiras e Auxiliares de Saúde,
Marítimos ou Fluviários.

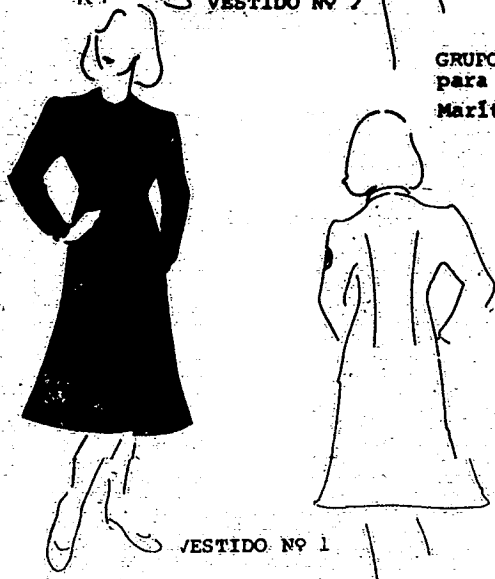


GRUPO BRANCO
Branco com Calção, para Subalternos,
'Marítimos, Fluviários, Pescadores e Regionais.'



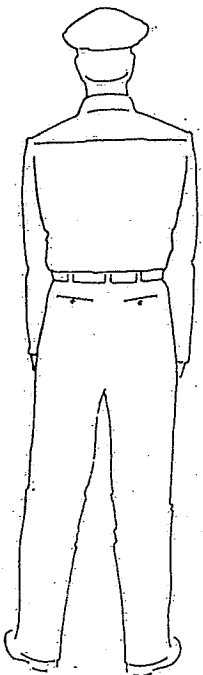
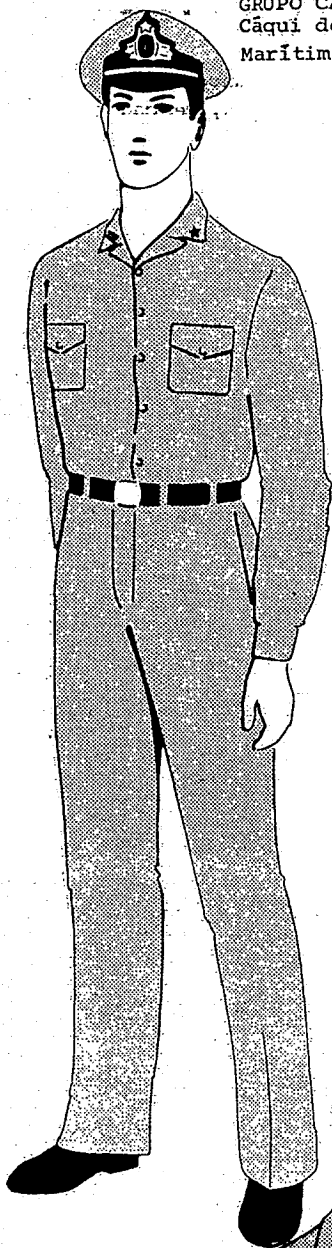
VESTIDO Nº 2

GRUPO AZUL - Vestido,
para Enfermeiras e Auxiliares de Saúde,
Marítimos e Fluviários da Região Sul.

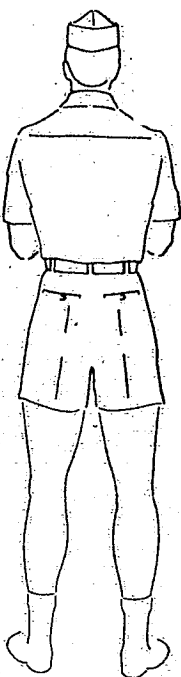
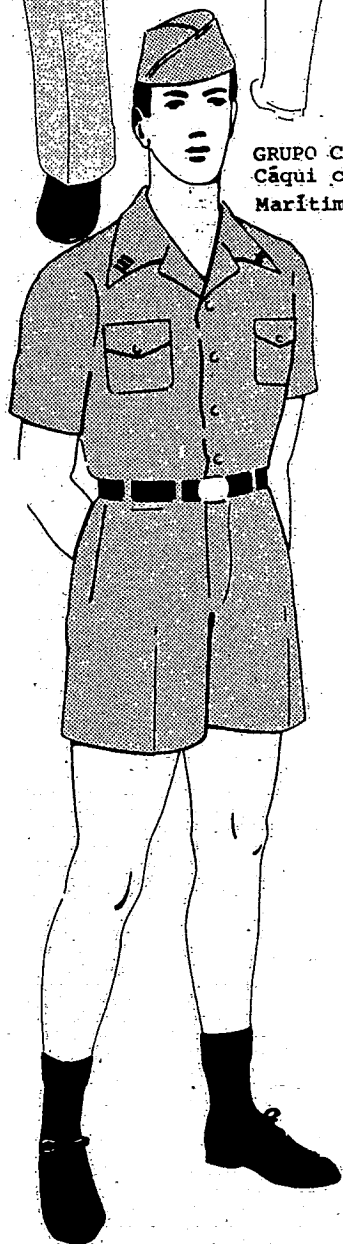


VESTIDO Nº 1

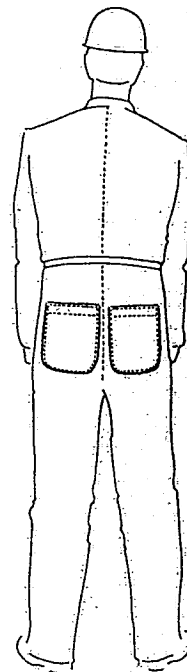
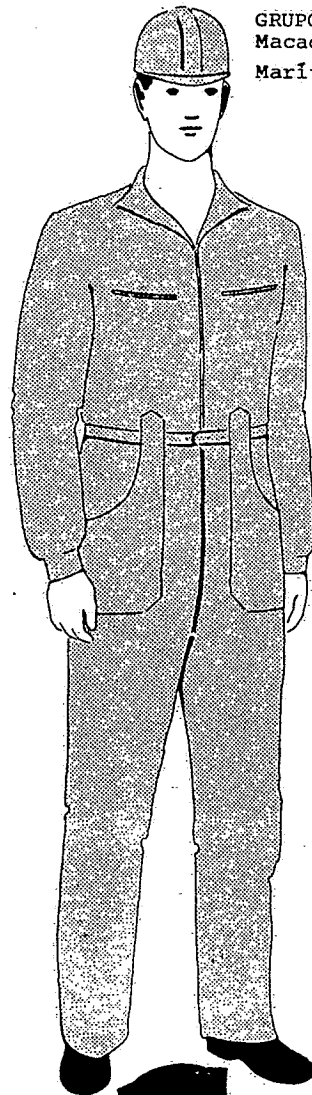
GRUPO CÂQUI
Câqui de Uso Interno, para Oficiais e Graduados
Marítimos, Fluviários, Pescadores e Regionais.



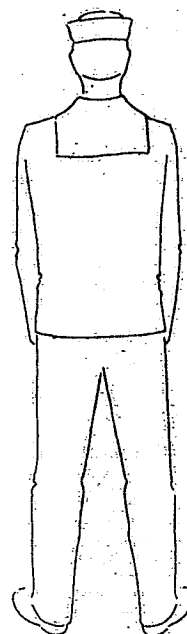
GRUPO CÂQUI
Câqui com calção - para Oficiais e Graduados,
Marítimos, Fluviários, Pescadores e Regionais.



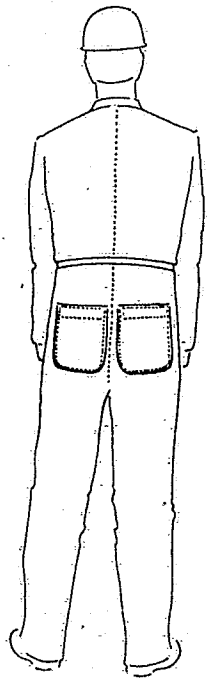
GRUPO CÂQUI
Macacão Câqui nº 1, para Oficiais e Graduados,
Marítimos e Fluviários.



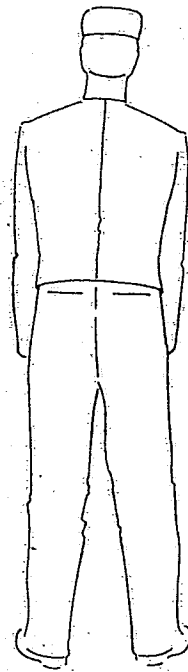
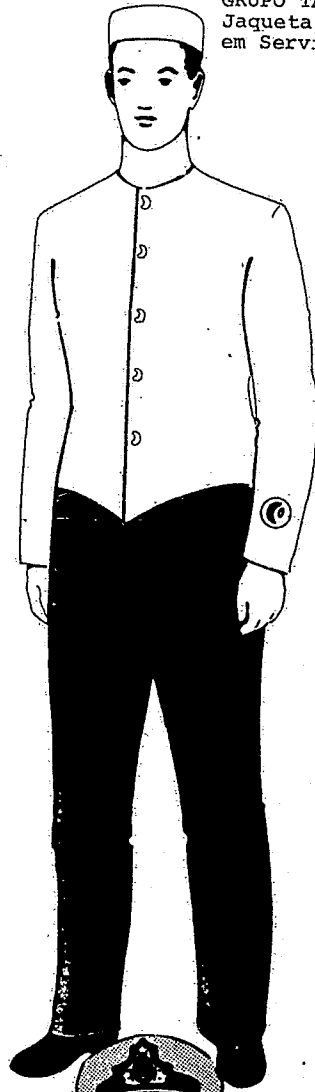
GRUPO MESCLA
Gandola e Calças Mesclas, para Subalternos,
Marítimos, Fluviários, Pescadores
e Regionais.
(Mescla Claro)



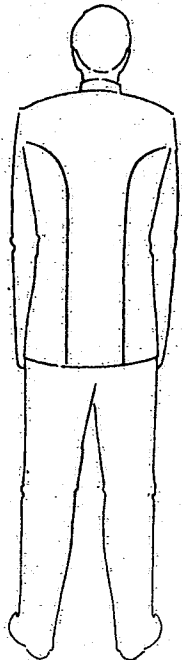
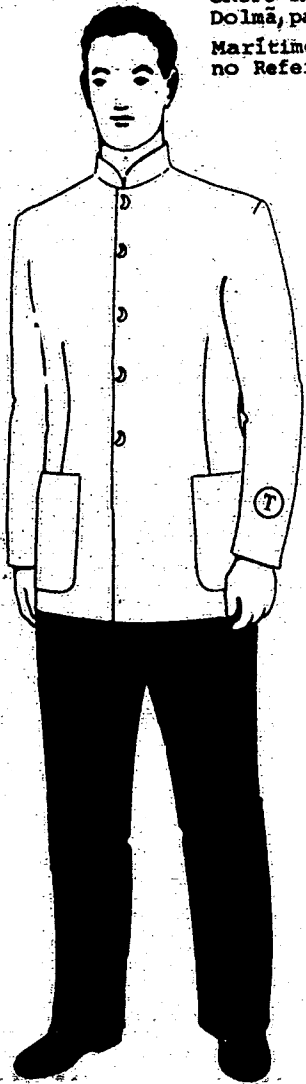
GRUPO MESCLA
Macacão Mescla nº 2, para Subalternos
Marítimos e Fluviários,



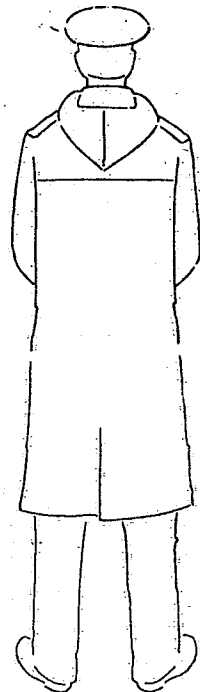
GRUPO TAIFA E RANCHO
Jaqueta, para Cozinheiros, Marítimos e Fluviários,
em Serviço na Cozinha.



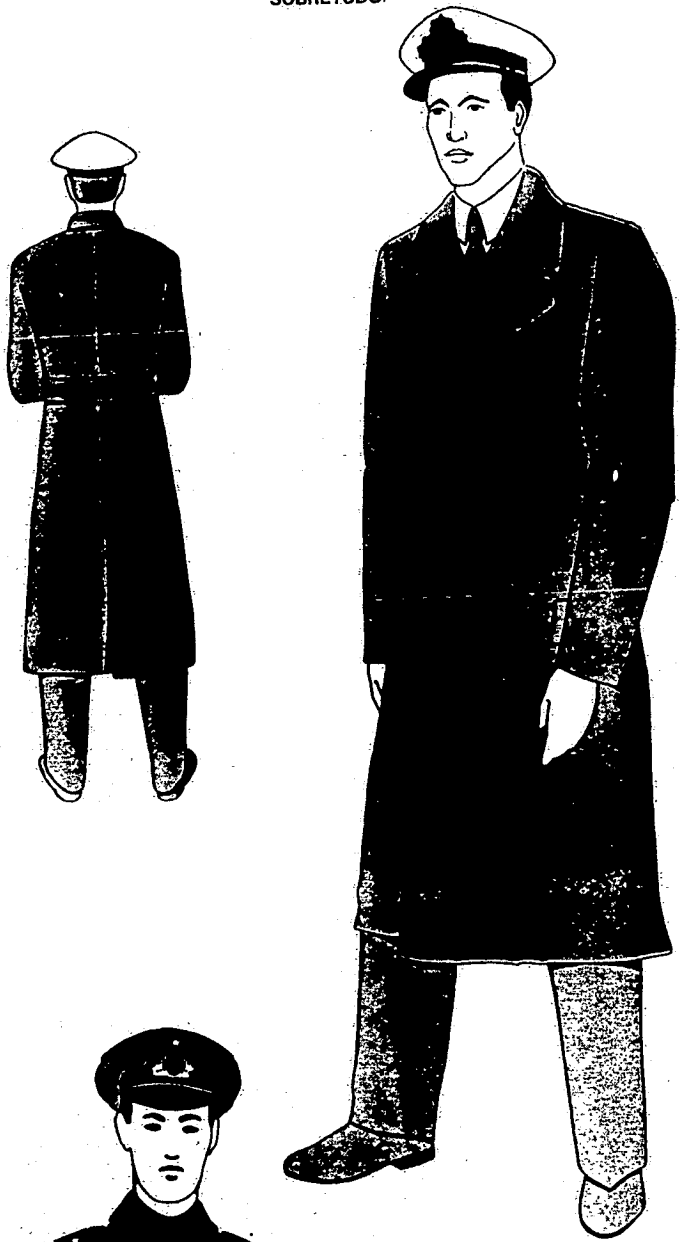
GRUPO TAIFA E RANCHO
Dolmã, para Taifeiros,
Marítimos e Fluviários, em serviço de Rancho
no Refeitório.



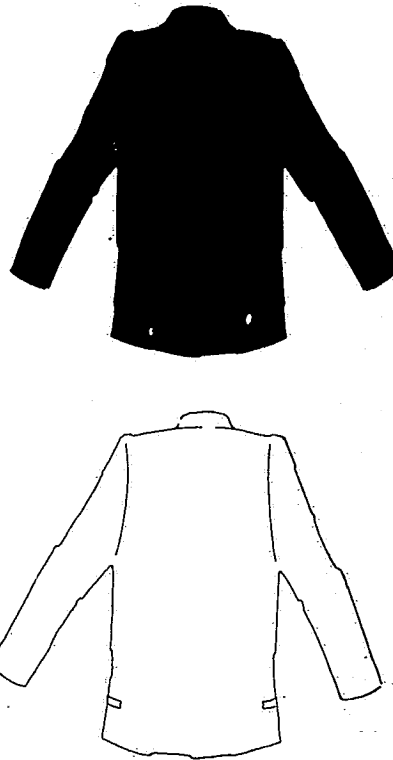
GRUPO ABRIGO
Capa Impermeável, para Oficiais, Graduados e
Subalternos,
Marítimos, Fluviários, Pescadores e Regionais.



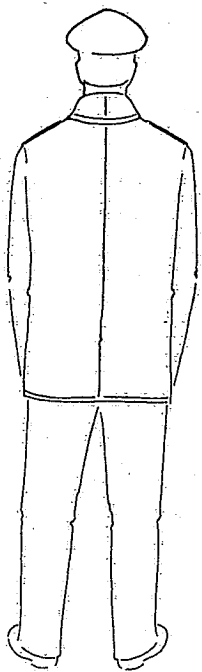
SOBRETUDO



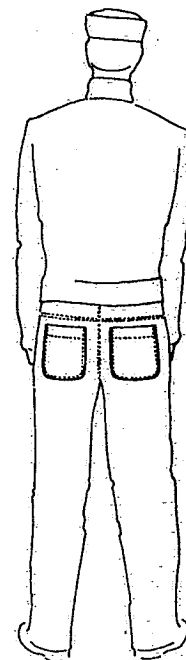
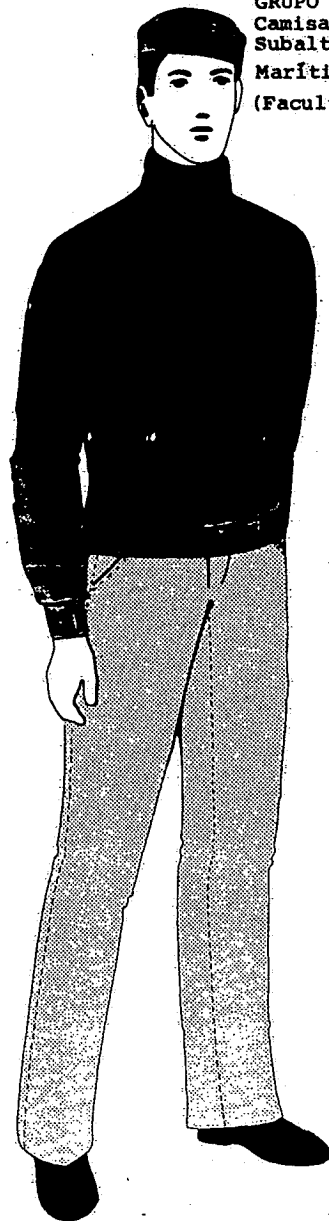
JAPONA FEMININA AZUL FERRETE



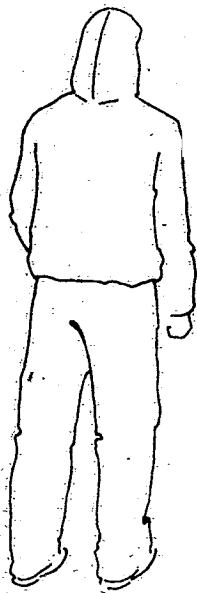
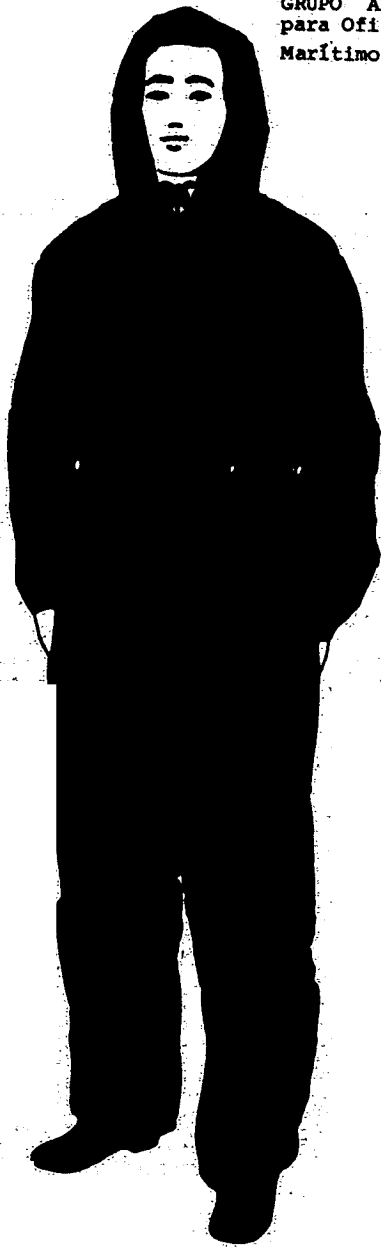
GRUPO ABRIGO
 Japona, para Oficiais, Graduados e Subalternos,
 Marítimos, Fluviários, Pescadores e Regionais.
 Usado de acordo com as condições climáticas.
 Facultativo para Fluviários, Pescadores
 e Regionais das Regiões Norte/Nordeste.



GRUPO ABRIGO
 Camisa de Frio, para Oficiais, Graduados e
 Subalternos,
 Marítimos, Fluviários, Pescadores e Regionais
 (Facultativo de acordo com as condições climáticas)



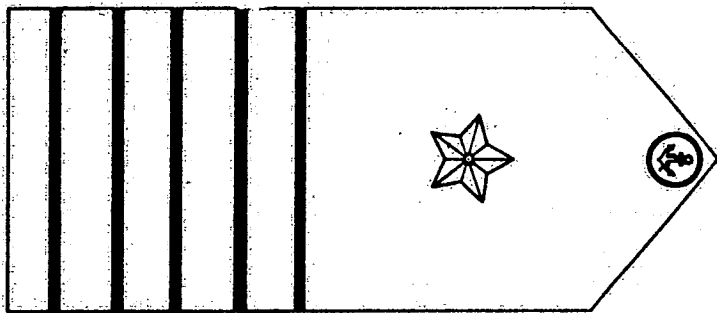
GRUPO ABRIGO-veste
para Oficiais, Graduados e Subalternos,
Marítimos e Pescadores.



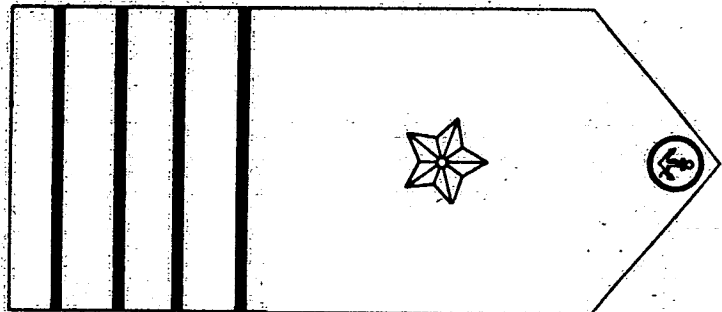
INSÍGNIAS E DISTINTIVOS

DO

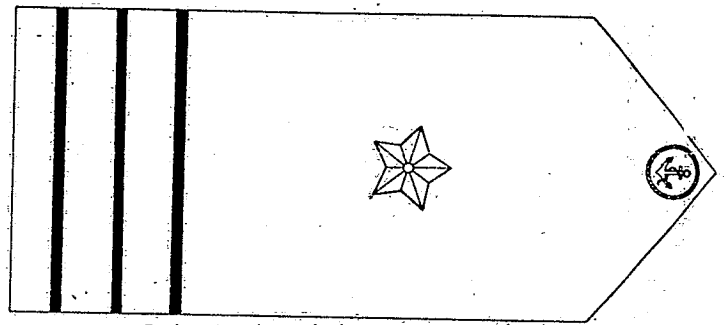
GRUPO DE MARÍTIMOS
GRUPO DE MARÍTIMOS,
Oficiais de Nautica



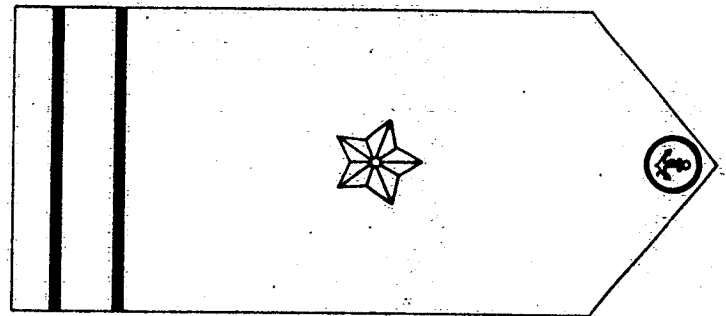
Capitão de Longo Curso



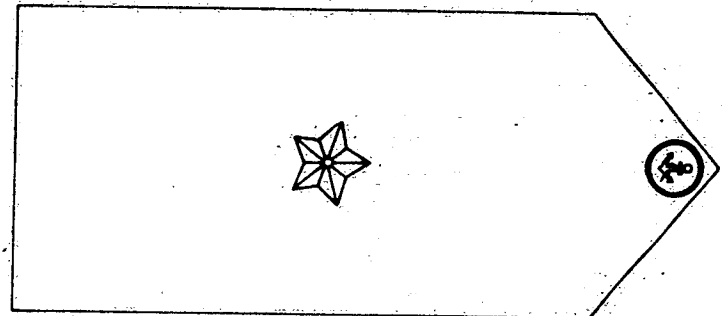
Capitão de Cabotagem



Primeiro Oficial de Nautica

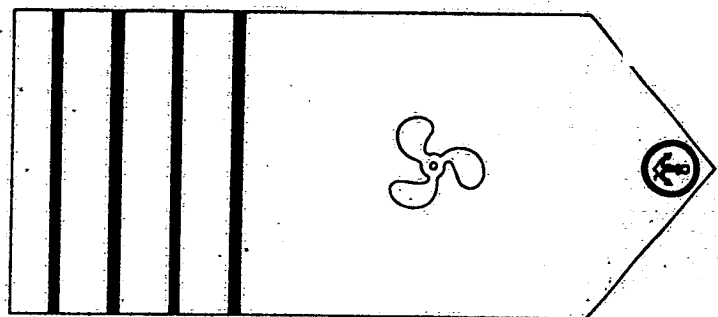


Segundo Oficial de Nautica

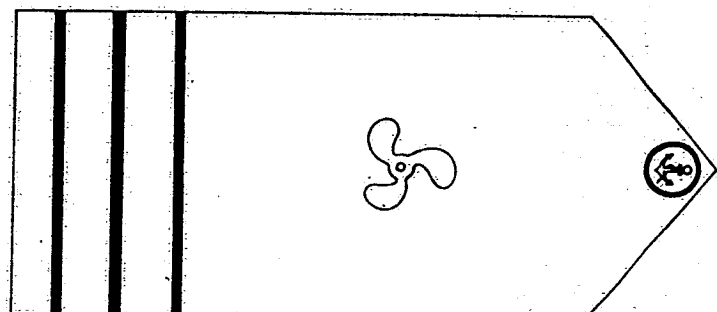


Praticante Aluno de Nautica

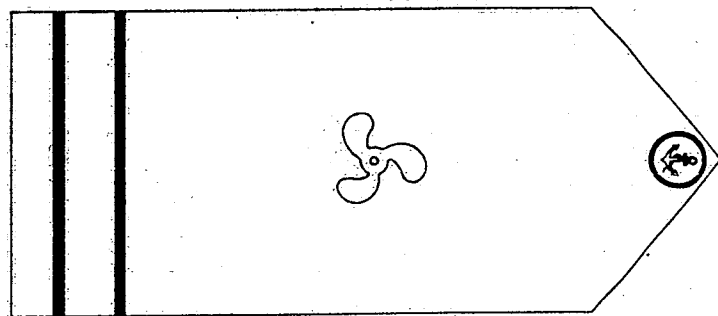
Oficiais de Máquinas



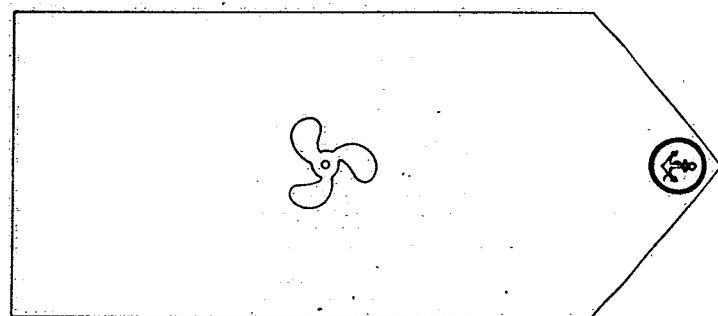
Oficial Superior de Máquinas



Primeiro Oficial de Máquinas

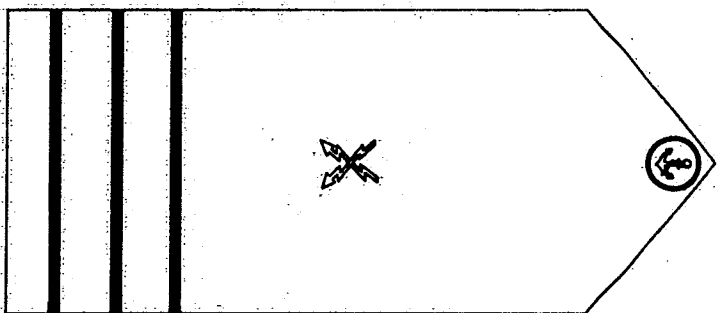


Segundo Oficial de Máquinas

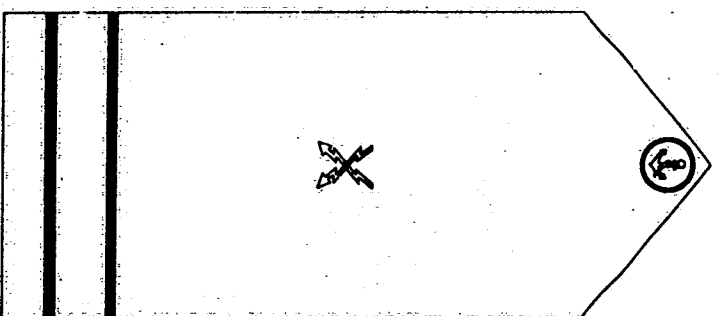


Praticante Aluno de Máquinas

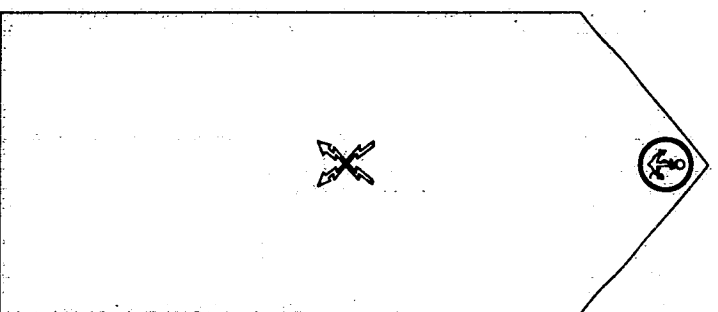
Oficiais de Radiocomunicações



Primeiro Oficial de Radiocomunicações



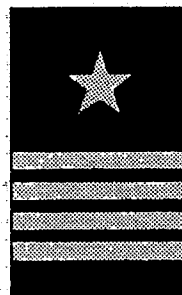
Segundo Oficial de Radiocomunicações



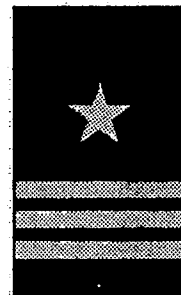
Praticante Aluno de Radiocomunicações

GRUPO DE MARÍTIMOS
Insignias e Distintivos para Punho

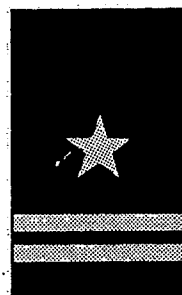
Oficiais de Nautica



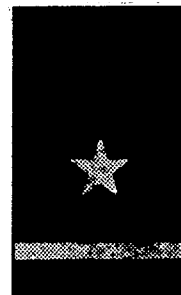
Capitão de Longo Curso



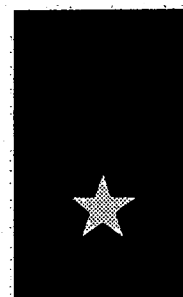
Capitão de Cabotagem



1º Oficial de Nautica



2º Oficial de Nautica



Praticante Aluno de Nautica

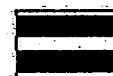
INSÍGNIAS DE COLARINHO PARA OFICIAIS (CATEGORIA)



CLC



CCB



1ON



2ON

EM FUNÇÃO DE COMANDO



CLC



CCB



1ON



2ON

EM FUNÇÃO DE CHEFIA DE MÁQUINAS



OSM

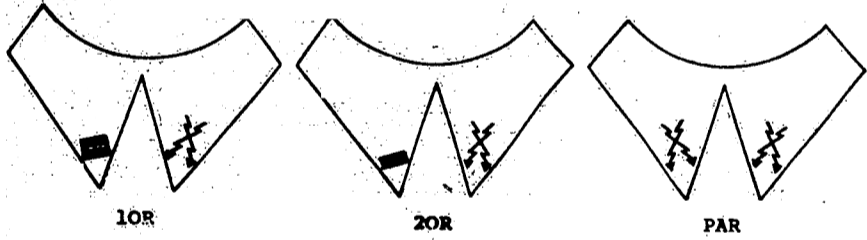
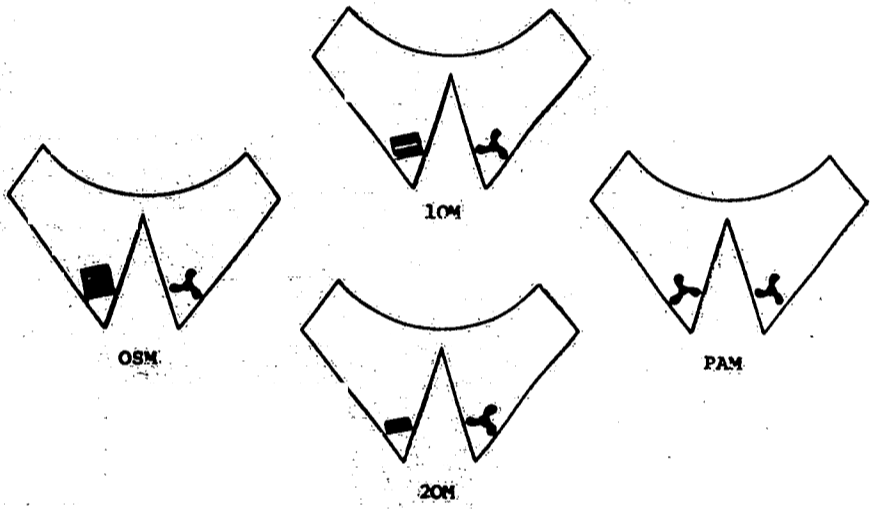
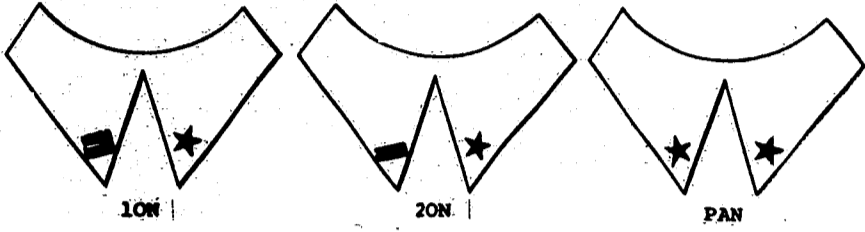
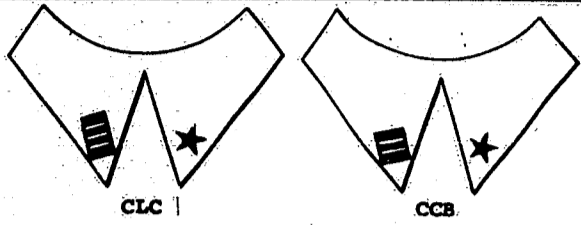


1OM

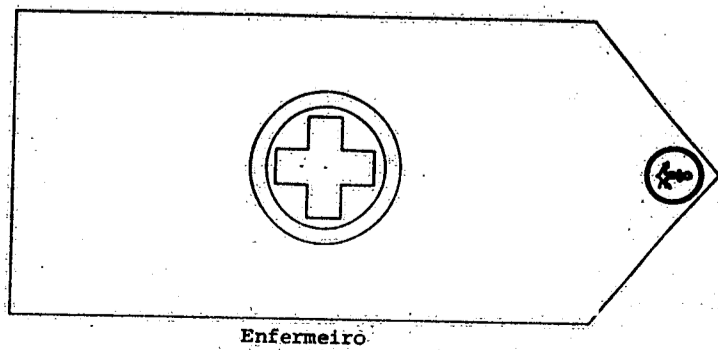
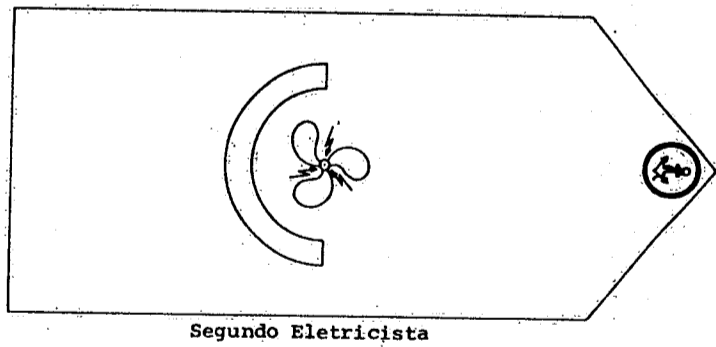
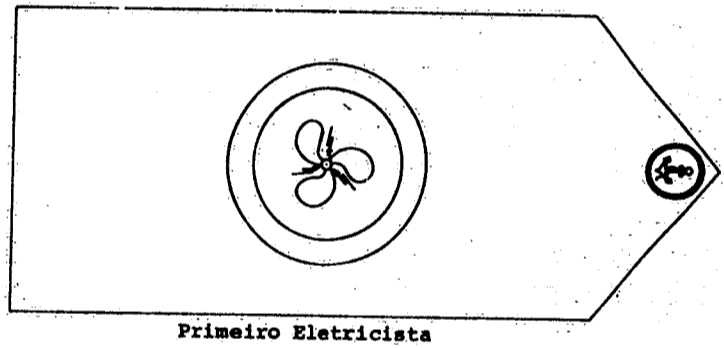
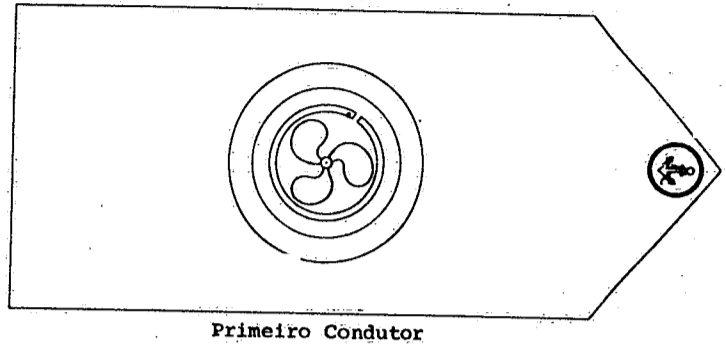
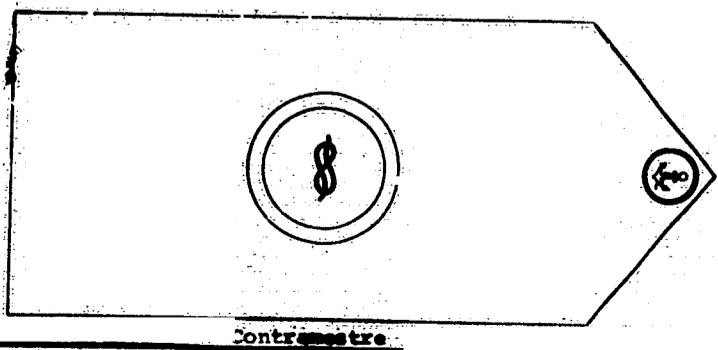
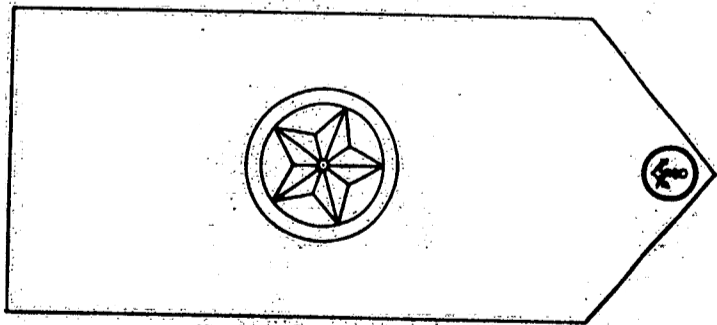


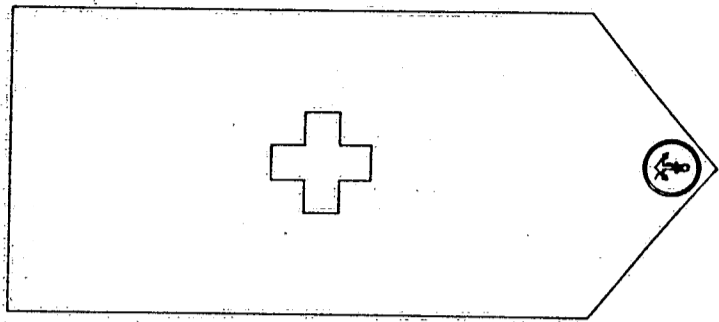
2OM

INSÍGNIAS E DISTINTIVOS PARA OFICIAIS

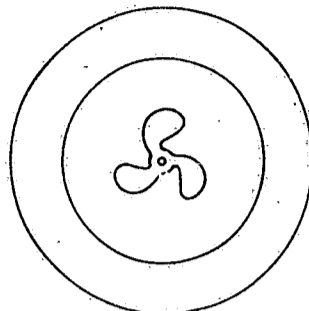


GRUPO DE MARÍTIMOS |
Graduados |

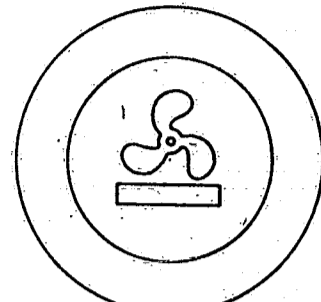




Auxiliar de Saúde



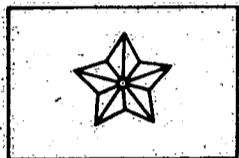
Moço de Máquinas



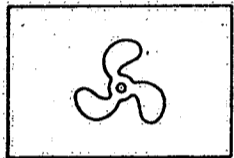
Marinheiro de Máquinas

GRUPO DE MARÍTIMOS
Distintivos de Especialidade

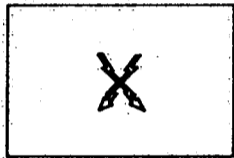
Oficiais



Náutica

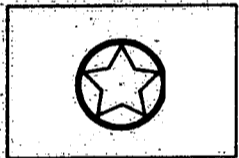


Máquinas



Radiocomunicações

Graduados



Mestre de Cabotagem



Contramestre



Primeiro Conductor



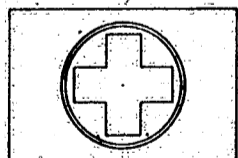
Segundo Conductor



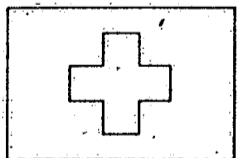
Primeiro Eletricista



Segundo Eletricista

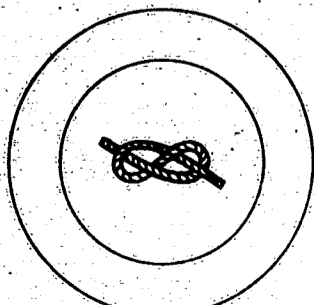


Enfermeiro/a

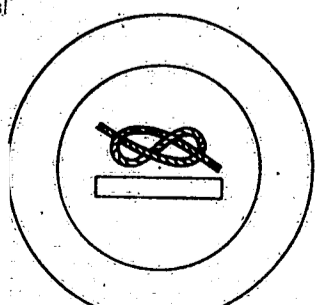


Auxiliar de Saúde

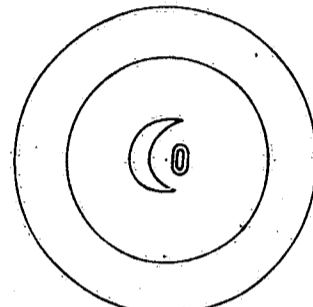
GRUPO DE MARÍTIMOS
Distintivos de Especialidade
Subalternos



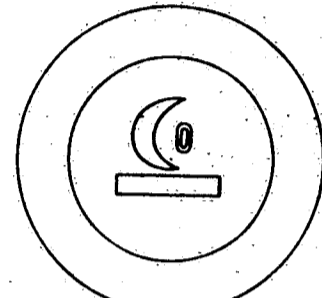
Moço de Convés



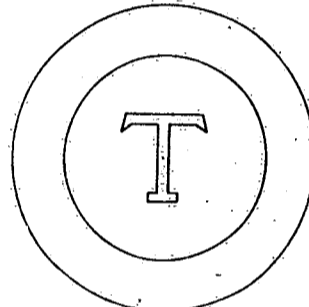
Marinheiro de Convés



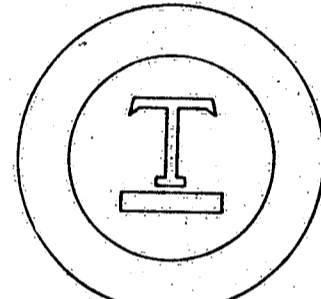
Segundo Cozinheiro



Primeiro Cozinheiro



Segundo Taifeiro

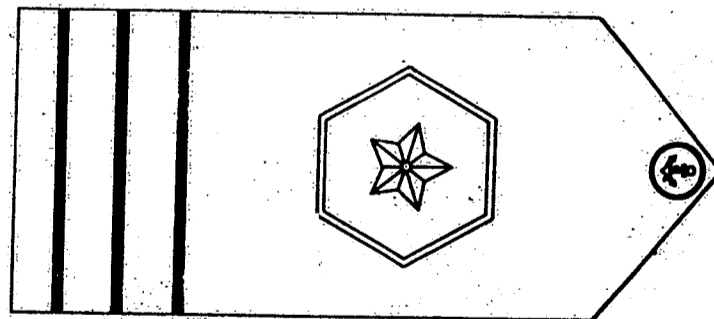


Primeiro Taifeiro

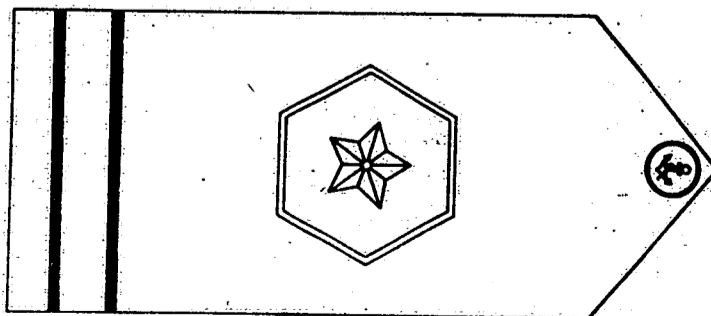
INSÍGNIAS E DISTINTIVOS

DO
GRUPO DE FLUVIÁRIOS

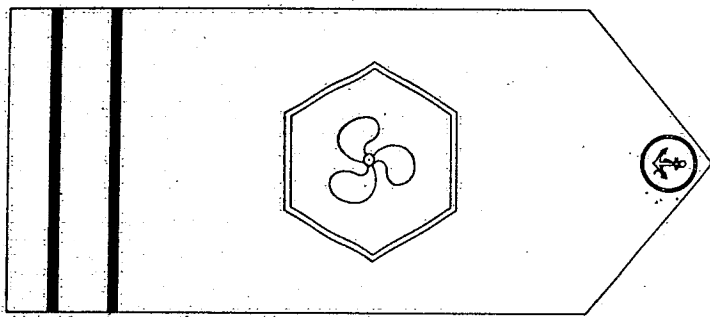
GRUPO DE FLUVIÁRIOS
(Oficiais)



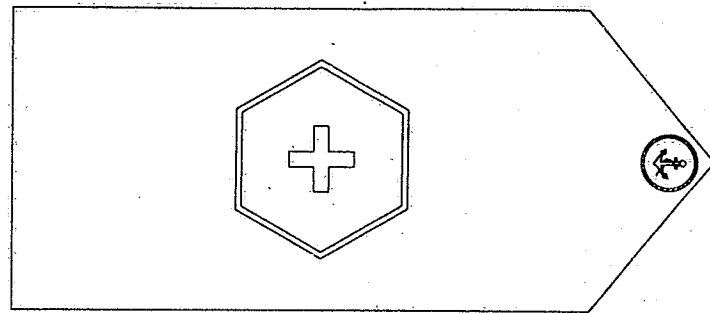
Capitão Fluvial



Piloto Fluvial

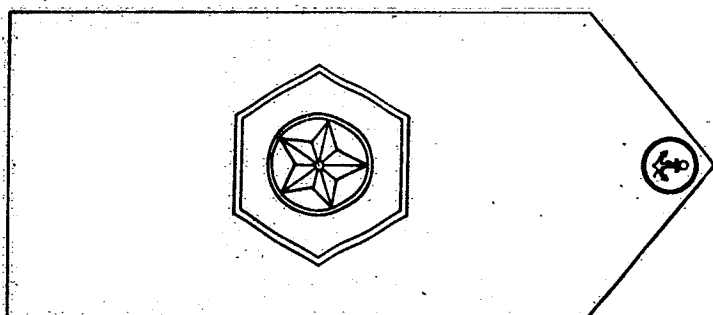


Supervisor Maquinista-Motorista Fluvial



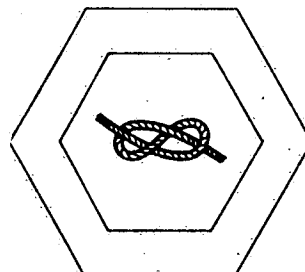
Auxiliar de Saúde Fluvial

GRUPO DE FLUVIÁRIOS
(Graduados)

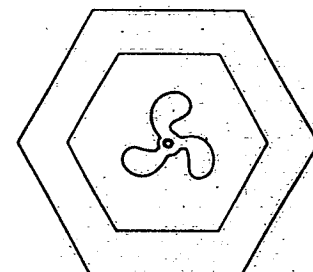


Mestre Fluvial

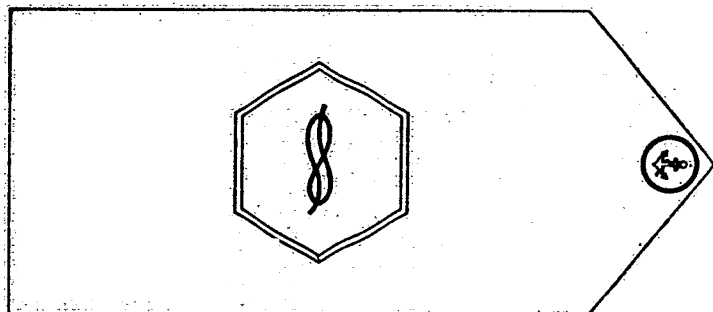
GRUPO DE FLUVIÁRIOS
Distintivos de Especialidade
Subalternos



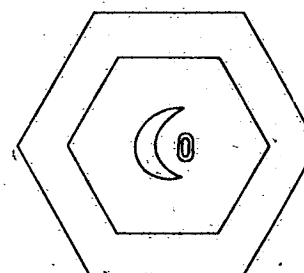
Marinheiro Fluvial de Convés



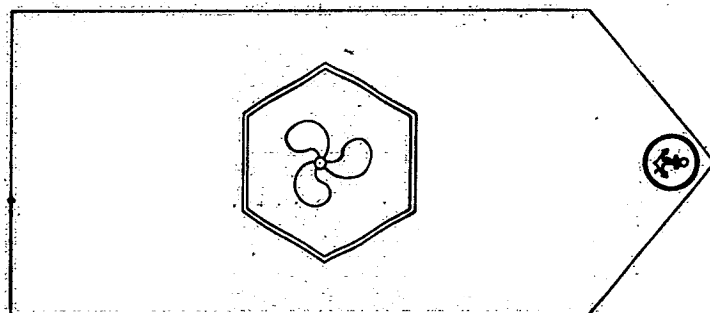
Marinheiro Fluvial de Máquinas



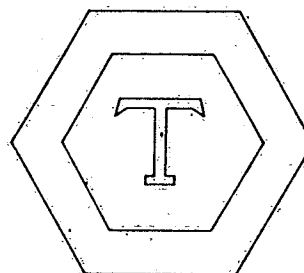
Contramestre Fluvial



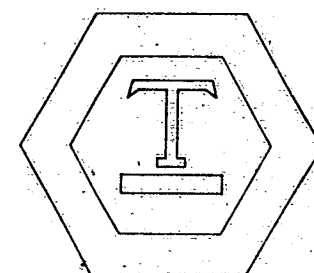
Cozinheiro Fluvial



Conductor-Maquinista Fluvial



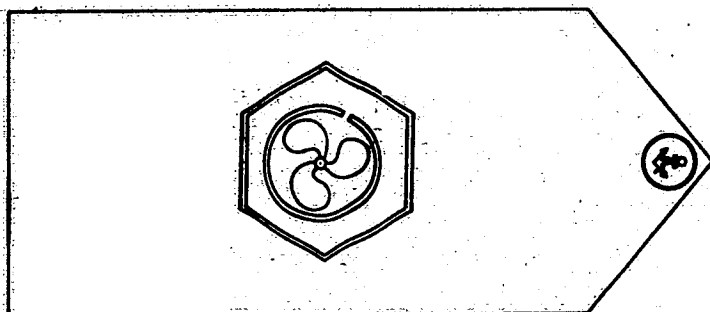
2º Taifeiro Fluvial



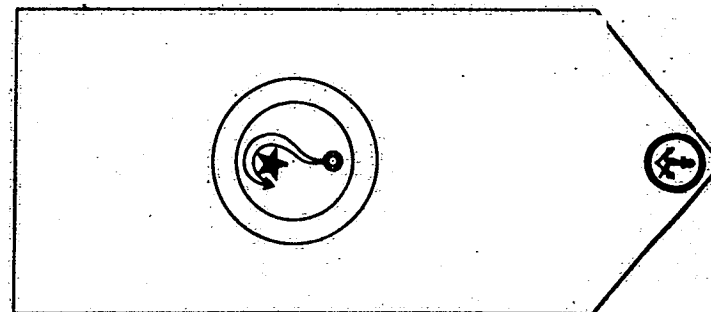
1º Taifeiro Fluvial

DISTINTIVOS
DO GRUPO
DE PESCADORES

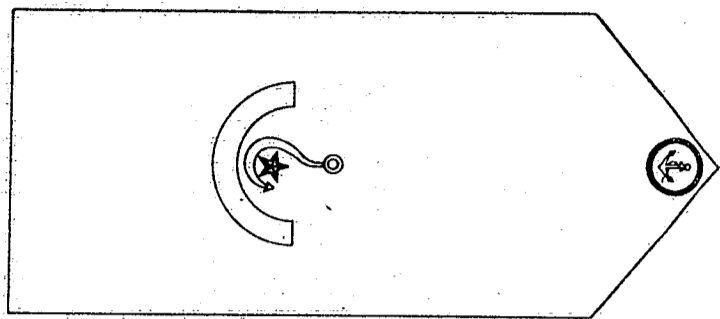
GRUPO DE PESCADORES
Graduados



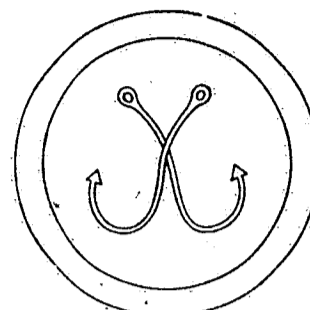
Conductor-Motorista Fluvial



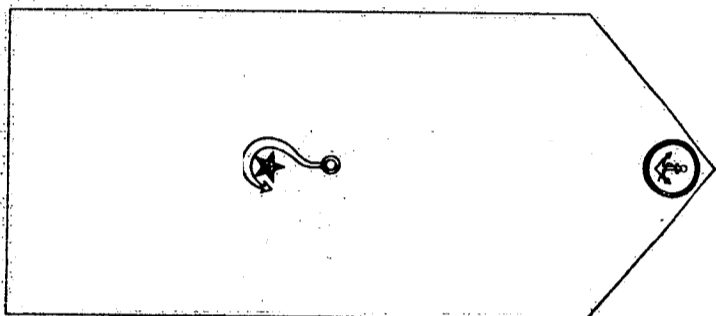
Patrão de Pesca de Alto-Mar



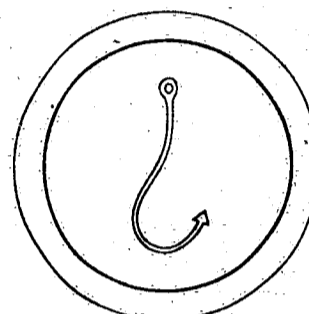
Patrão de Pesca Costeira



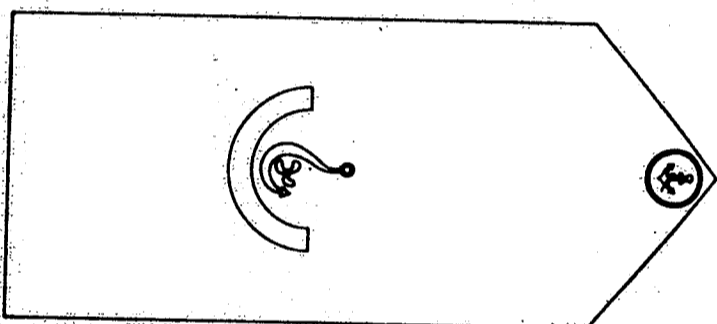
Pescador Profissional



Patrão de Pesca Regional



Aprendiz de Pesca



Conductor-Motorista de Pesca

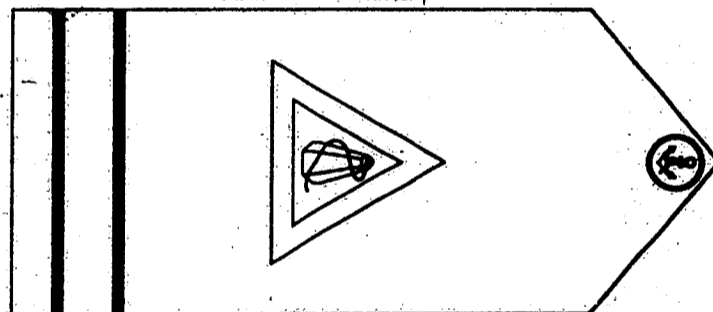
INSÍGNIAS E DISTINTIVOS:

DO

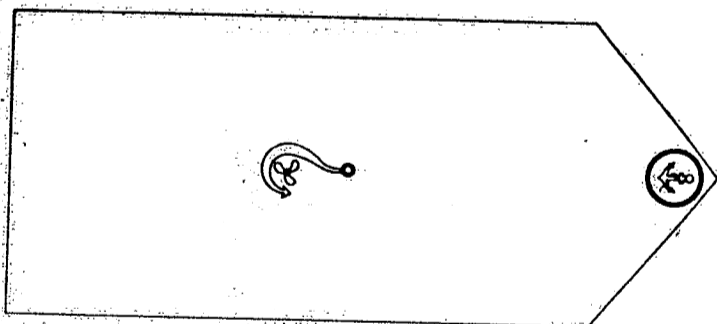
GRUPO DE REGIONAIS

GRUPO DE REGIONAIS

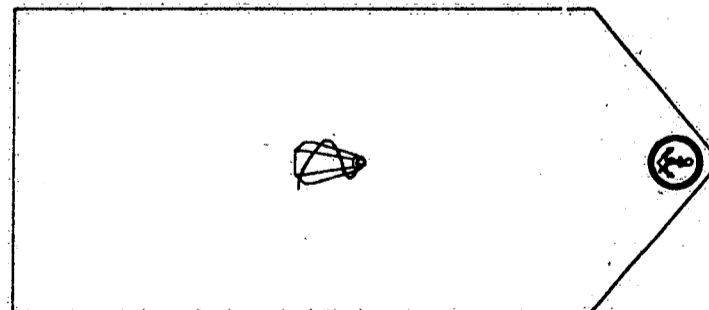
Oficiais



Prático



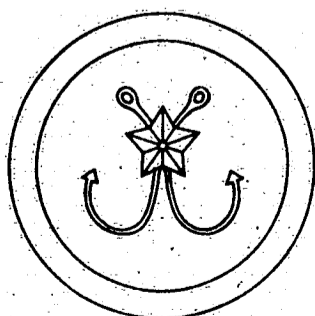
Motorista de Pesca



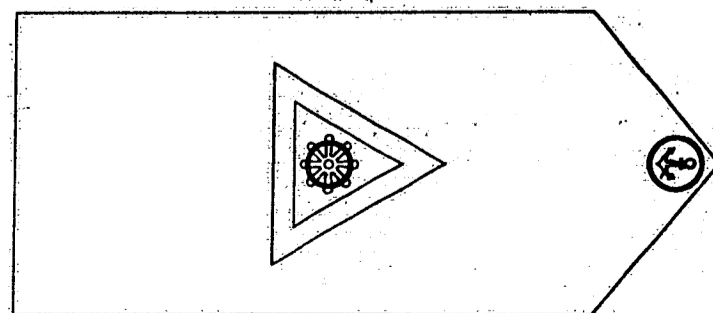
Praticante de Prático

GRUPO DE PESCADORES:
Subalternos

(Graduado)

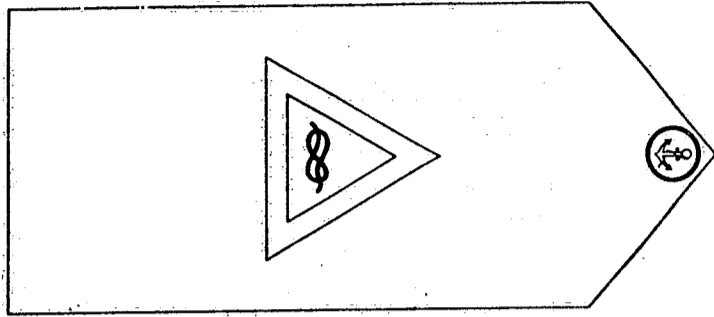


Pescador Profissional Especializado

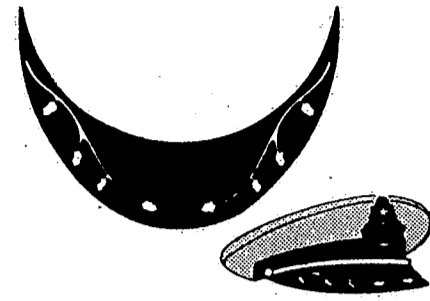


Arrais

(Graduado)



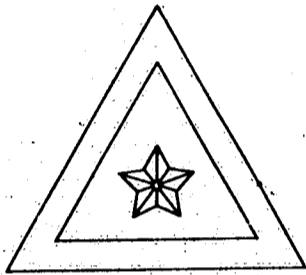
Mestre Regional



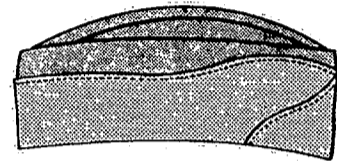
Boné de Capitão de Longo Curso

GRUPO DE REGIONAIS

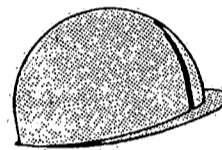
Subalternos



Marinheiro Regional de Convés



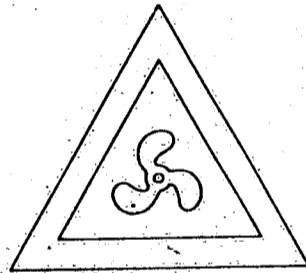
Gorro Cáqui



Capacete de Segurança



Caxangá



Marinheiro Regional de Máquinas

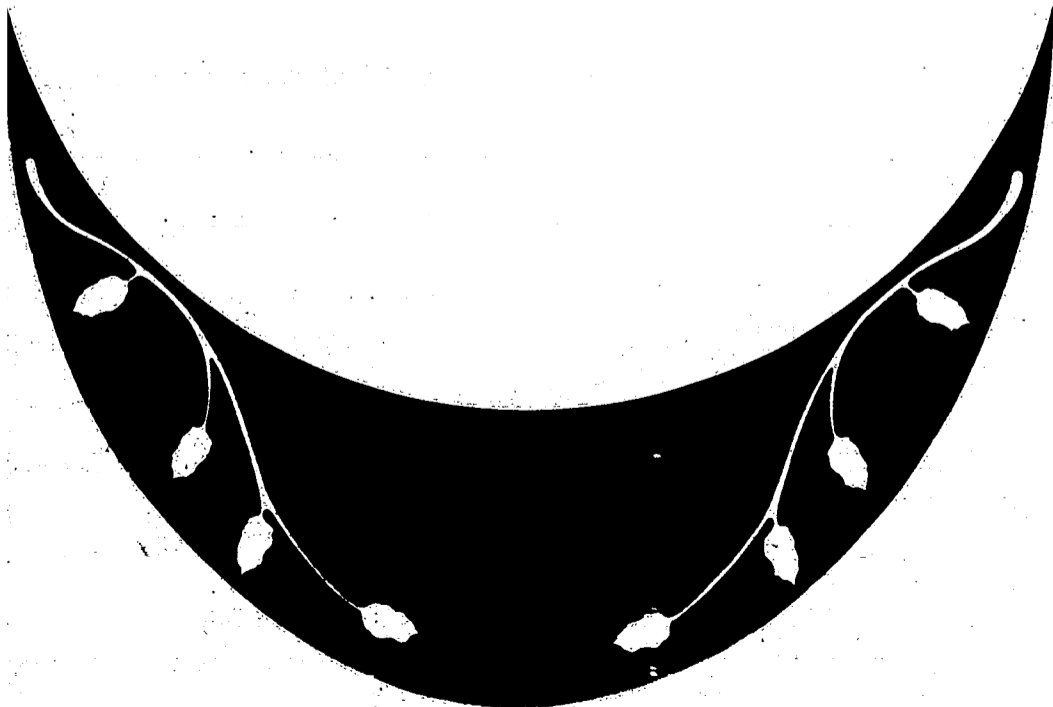
CRACHÁS DE BONÉS



Nº 1 - Para Oficiais



Nº 2 - Para Graduados

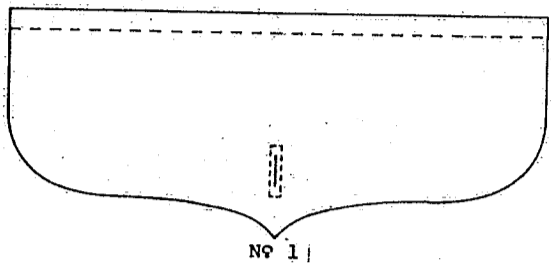


Pala para boné de Capitão de Longo Curso (1/4)

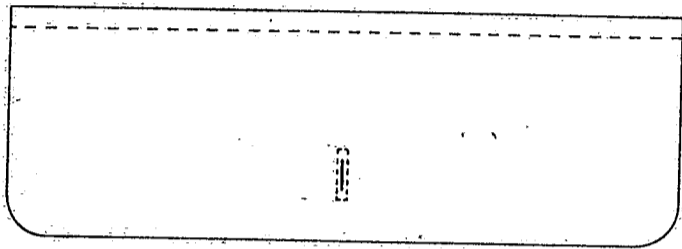
FIVELA DOURADA PARA CINTOS



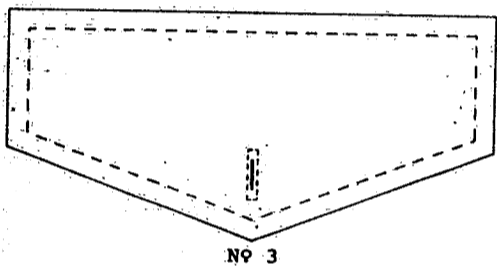
PORTINHOLAS



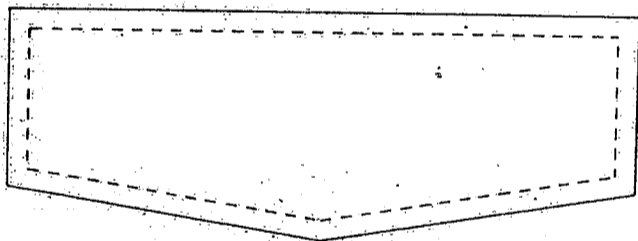
Nº 1



Nº 2



Nº 3



Nº 4

BOTÕES DOURADOS



Nº 1 e 2



Nº 3



Nº 4

BOTÕES DE MASSA OU NYLON



Nº 5



Nº 6



Nº 7



Nº 8



Nº 9

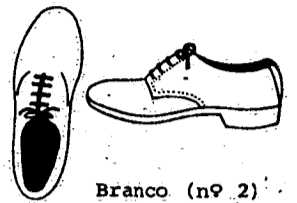


Nº 10

MODELOS DE SAPATOS MASCULINOS



Preto (nº 1)



Branco (nº 2)

MODELOS DE SAPATOS FEMININOS



Preto de Salto Baixo (nº 3)

